

*Reliable Partner of  
10T*



# CONTENT

- 1
- 2
- 3

**About Us**

**Product Introduction**

**Manufacturing**

1

## About us



## Company Profile

---

Flairmicro is an innovative corporation which focus on developing automobile wireless product and solution.

- HQ : Fuzhou
  - R&D : Shanghai, Xiamen
  - Sales office: Shenzhen
-



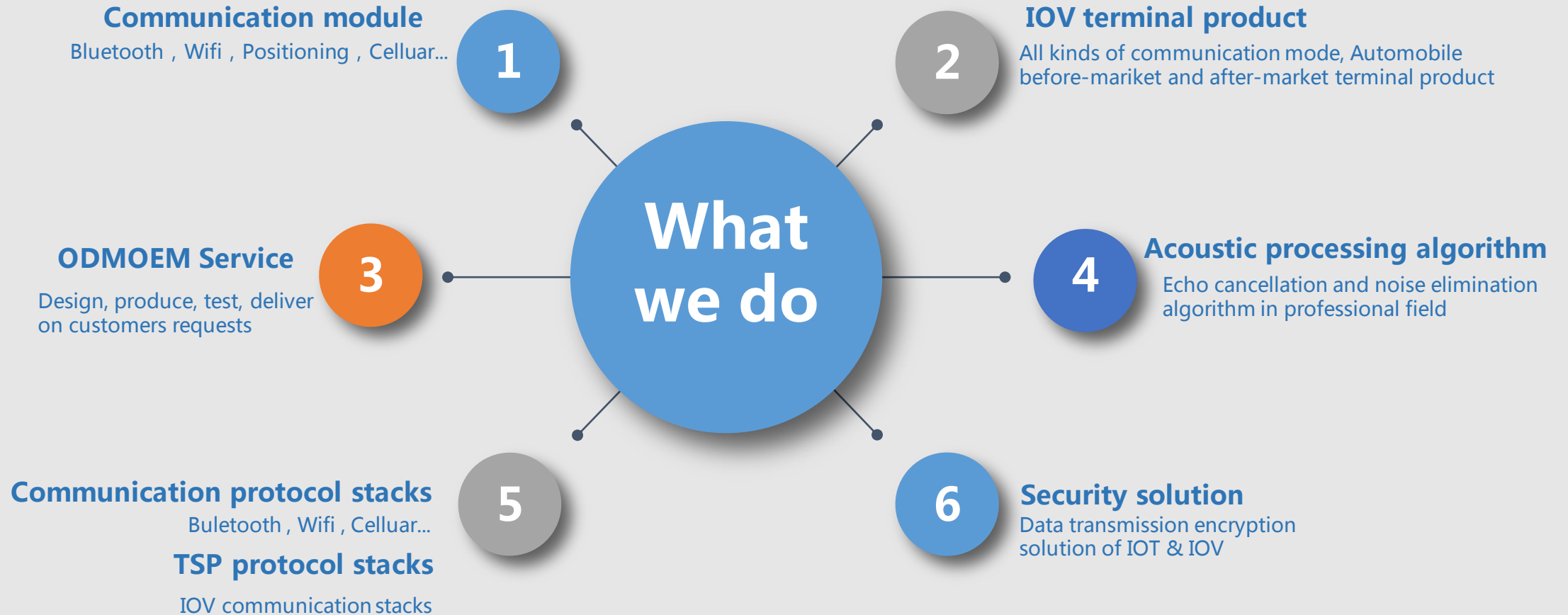
01 Fuzhou-HQ

02 Xiamen-IOT R&D

03 Shanghai-IOV R&D

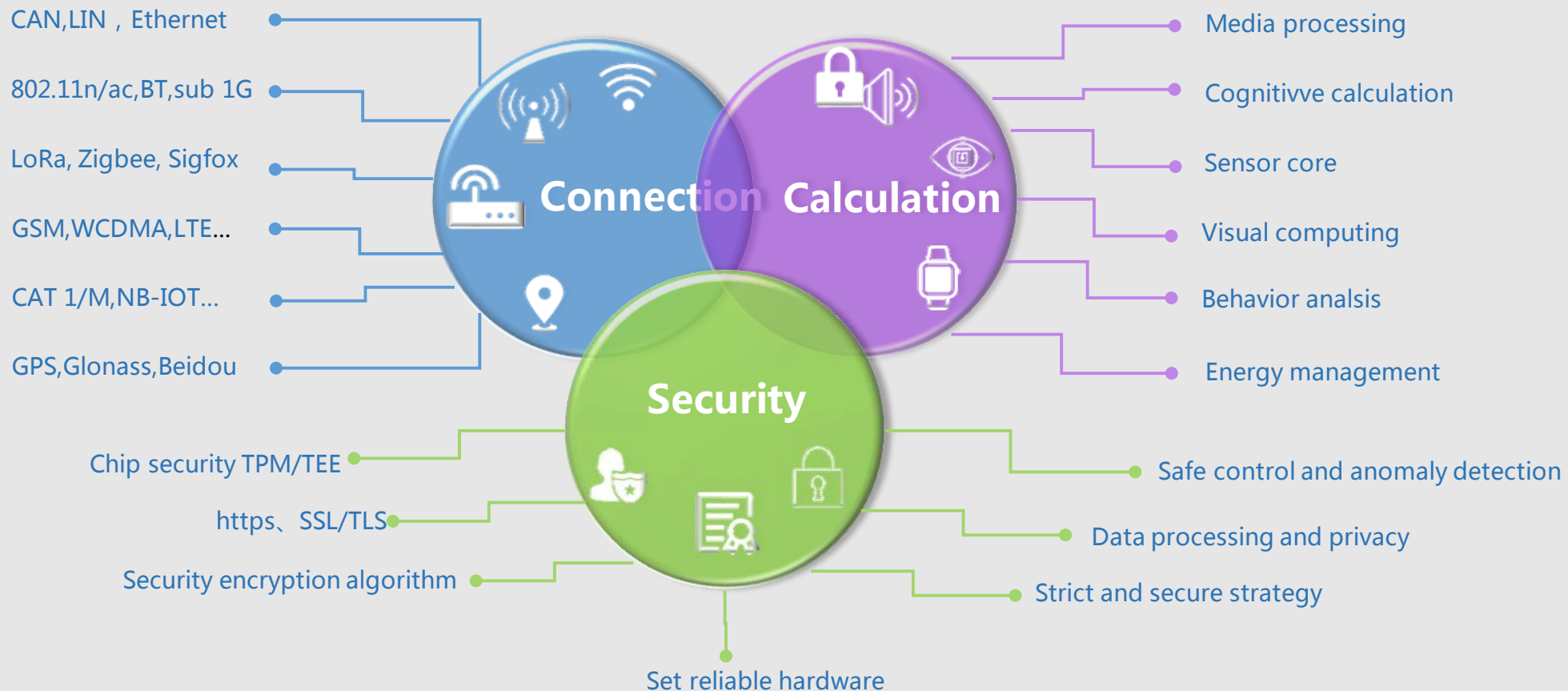
04 Nanjing-Production base

05 Shenzhen-Sales office



# Key technology of IOT

Built intelligent and secure IOT world







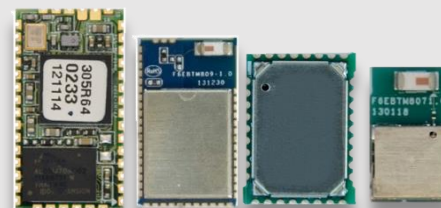
## IOV-TBox

- Support all mainstream communication mode
- Ample input and output interface
- High-reliable and cost-effective
- Support e-Call
- Support built-in battery and antenna



## IOT-Celluar module

- Support multiple communication mode
- Support three communication operators in China at the same time
- Through strict reliability testing
- Support software customize development



## IOT-short-distance communication module

- Bluetooth, Wifi, Positioning...
- Meet strict requirement of automobile before-market
- Remarkable radio-frequency performance
- Reliable and simple interfaces



## Stacks & Algorithm

- Stable and reliable communication profiles
- Outstanding acoustic algorithm
- Secure and reliable vehicle communication profiles
- Customized service



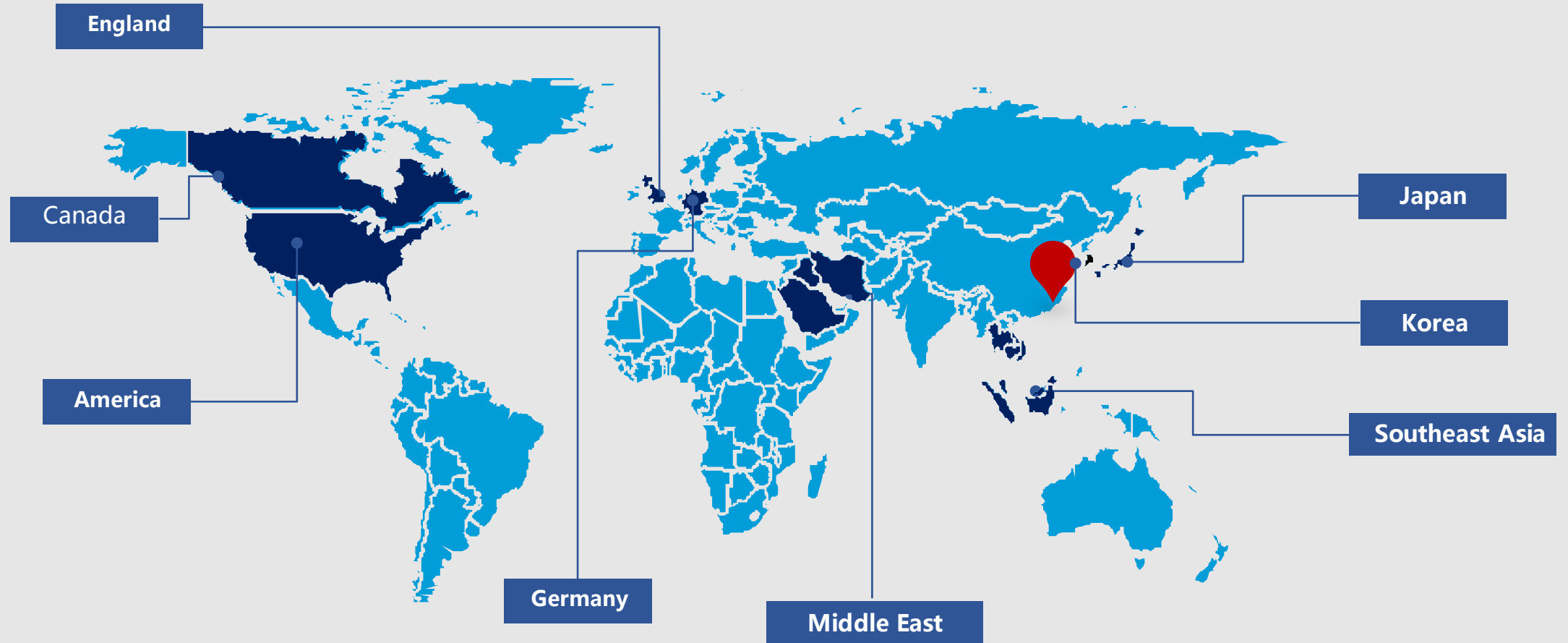
# Qualification Certification

## System certification ISO9001, ISO14001, TS16949



## Product certification CE, IC, FCC, BQB...





2

Product

# Module Roadmap

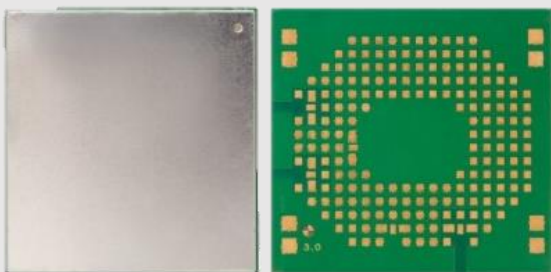
## M2M Roadmap

	In Production					2018	2019			
BT FULL	CSR BC8 BTM8XX	CSR BC5 BTM5XX	CSR BC4 BTM4XX	CSR 1010 BTM10X		Qualcomm Qcc300X BTM70X	Nordic nRF52840 TBD	Qualcomm CSR68100 BTM72X		
	OV OVC3860 BTM04X	RDA RDA5856 BTM069	CSR 1024 BTM20X			Nordic nRF52832 BTM020	Qualcomm Qcc500X BTM71X			
BT HCI	CSR BC6 BTM60X	CSR 8311 BTM808	CSR 8350 BTM818	CSR 8510 BTM804	CSR 8811 BTM805	Cypress CY8819 TBD BT5		BT5.1 TBD		
	Broadcom BCM89071 BTM081A	RDA RDA5875 BTM061	RDA RDA5876 BTM065	Cypress CY20713 BTM081B						
WIFI only	ESPRESSIF ESP8266 WFM011/012	Atheros AR6302 CBM2A1				802.11ac TBD		802.11ax TBD		
Combo	TI WL183X CBM28X	TI WL187X CBM38X	TI WL1861 CBM581			Qualcomm QCA65X4AU TBD Ac & BT4.2	Broadcom BCM88335 CBM251	802.11AX & BT5 TBD		
	Broadcom BCM88335 CBM251					Broadcom BCM88335 CBM251				
GNSS	Unicore UC221 SLM301	Allystar HD8020 SLM310				Allystar HD8020D SLM311	Allystar HD8089 TBD			
Cellular	VIA CDMA2000 EVDO MCM230	Qualcomm 8215 GSM&WCDMA MCM530	Qualcomm 9215 CAT3 LTE&WCDMA GSM MCM630A	Qualcomm 9615 CAT3 LTE&WCDMA GSM&CDMA MCM63MA	Qualcomm 9607 CAT4 LTE&WCDMA GSM&CDMA MCM63MB	Qualcomm 9628 CAT4 LTE&WCDMA GSM&CDMA MCM63MC	CAT-M NBIOT EMTC MCM83X	Qualcomm 9X40 CAT6 LTE&WCDMA GSM&CDMA MCM64M	Qualcomm 9150 V2X LTE&WCDMA GSM&CDMA MCM65M	5G TBD

- BT Data Transmission
- BT Audio
- 802.11n
- 802.11ac
- 802.11ax
- 2G&3G Cellular
- 4G Cellular

## 4G/LTE Multi-Band Module

### FLC-MCM630A/B/C



### Feature

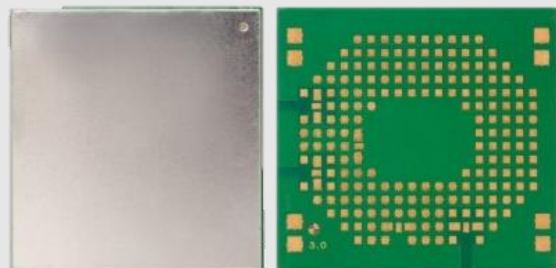
- Voice/SMS/MMS/Data
- Full telecommunications function support
- DOV support
- GNSS (AGPS)
- WiFi Access Point supported
- 3-Priority Smart Router
- NIC(Linux) & NDIS(Windows) Interface Support
- TTS/ASR (Optional)
- Support GSMA BIP

### Specifications

- Modem Technology  
2G-GSM, 2G/3G-CDMA, 3G-TDSCDMA, 3G-UMTS/HSPA, 4G-LTE(TDD/FDD)
- Frequency Bands  
TDD/FDD-LTE : Band 38(2600MHz), Band 39(1900MHz), Band 40(2300MHz)  
Band 1(2100MHz), Band 3(1800MHz)  
UMTS : Band 1(2100MHz), Band 3(1800MHz)  
CDMA2000 1X & EVDO : BC0(800MHz)  
TD-SCDMA : Band 34(2000MHz), Band 39(1900MHz)  
GSM : Band 3(1800MHz), Band 8(900MHz)
- Mounting  
Surface Mount (LGA)
- Electrical Interfaces  
USB2.0, HSIC
- Operational temperature range  
-40°C to +85°C (3.2 to 4.2V)
- Chipset  
Qualcomm MDM9615/9607/9628
- Application Processor  
Integrated ARM Cortex A5 Processor 500MHz~1.2GHz

# 3G Multi-Band/Mode Module

## FLC-MCM530



### Features

- Voice/SMS/MMS/Data
- Full telecommunication functionalities
- DOV Supported for eCall
- GNSS: GPS/GLONASS/BD (optional)
- WiFi 802.11 a/b/g/n with SoftAP & WiFi Direct
- Bluetooth 2.1/3.0/4.0
- Noise Suppressing & Echo Cancelation
- Smart Routing Capabilities
- TTS/ASR (Optional)

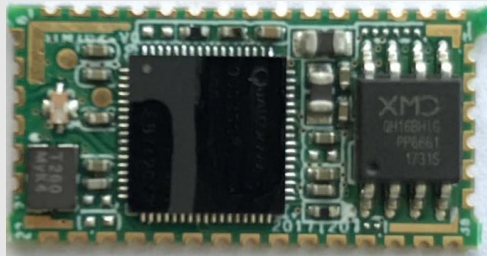
### Specifications

- Modem Technology  
2G-GSM, 2G/3G-CDMA, 3G-TDSCDMA, 3G-UMTS/HSPA, 4G-LTE(TDD/FDD)
- Frequency Bands  
UMTS : Band 1(2100MHz), Band 3(1800MHz)  
GSM : Band 3(1800MHz)、Band 8(900MHz)
- Mounting:  
Surface Mount (LGA, BGA, LCC, etc.)
- Electrical Interfaces:  
USB2.0, HSIC
- Operational Temperature Range:  
Normal: -30°C to +75°C  
Extended: -40°C to +85°C
- Chipset  
Qualcomm MDM8x15
- Application Processor Integrated ARM Cortex A5 Processor

# BT FULL Module

Dual mode BT5 Module

BTM70x Series



CSR solution

*New!*

- A2DP (1.3.1)
- AVRCP (1.6)
- DUN /OTA
- HFP (1.7)
- HSP (1.2)
- PBAP (1.1)
- SPP (1.2)

- Size:23.7mmx12mmx2.2mm
- Chipset: CSR solution
- Flash: 16Mbits~32Mbit
- 80MIPS DSP
- Bluetooth Class 1.5 (30 meters)
- Temperature: -40°C to +85°C
- BT Profiles: HSP/HFP, SPP, PBAP, A2DP and AVCRP
- UART interface to 3Mbits/s
- USB interface
- Built - in EC / NR

## Features

- Phone book download
- Double Link
- SW upgradeable
- 128-bit Bluetooth encryption
- Accept/Reject/End Calls
- Last number redial
- Call waiting
- 3-Way calling
- Microphone mute/un-mute
- Caller ID/name display
- Voice dial
- Number dialing
- DTMF dialing
- Call history
- SMS indication

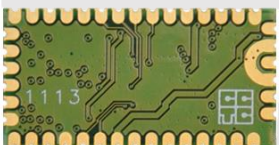


# BT FULL Module

## BT 3.0 Module

## BTM50x Series

*FCC, CE, QDID Listed, VDA 1.6 Passed*



CSR BC5MM

- A2DP (1.2)
- AVRCP (1.5)
- DUN
- HFP (1.6)
- HSP (1.2)
- OPP (1.0)
- PBAP (1.1)
- SPP (1.2)

- Size: 3.7mmx12mmx2.2mm
- Chipset: BC5MM
- Flash: 16Mbits
- 64MIPS DSP
- Bluetooth Class2 (10meters)
- Temperature: -40°C to +85°C
- BT Profiles: HSP/HFP, SPP, OPP, PBAP, A2DP and AVRCP
- UART interface to 3Mbits/s
- USB interface
- 14 GPIOs, 2 AIOs

### Features

- Phone book download
- Double Link
- SW upgradeable
- 128-bit Bluetooth encryption
- Accept/Reject/End Calls
- Last number redial
- Call waiting
- 3-Way calling
- Microphone mute/un-mute
- Caller ID/name display
- Voice dial
- Number dialing
- DTMF dialing
- Call history
- SMS indication

# BT FULL Module

## BT 4.0 Dual-mode Module-Industrial

### BTM809



CSR 8670

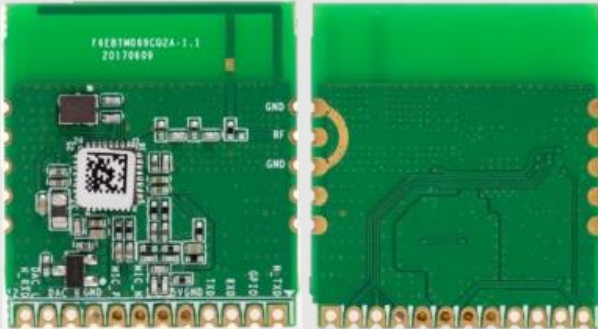
- Dual-mode BT4.0 & BT3.0
- Stereo codec
- Latest CVC for NBS & WBS connections
- High performance
- BT Profiles: HSP/HFP, SPP, OPP, PBAP, A2DP and AVCRP

- Size: 20.8mmx11.8mmx2.7mm
- Chipset: CSR8670
- Flash: 16Mbits
- Bluetooth Class 2 (10 meters)
- Temperature: -40°C to +80°C
- UART interface to 3Mbits/s
- Interface: USB , IIS , PCM , SPDIF,UART
- LED controllers
- Capacitive touch sensor inputs

# BT FULL Module

## BT 4.0 Dual-mode Module-Consumer

### BTM069



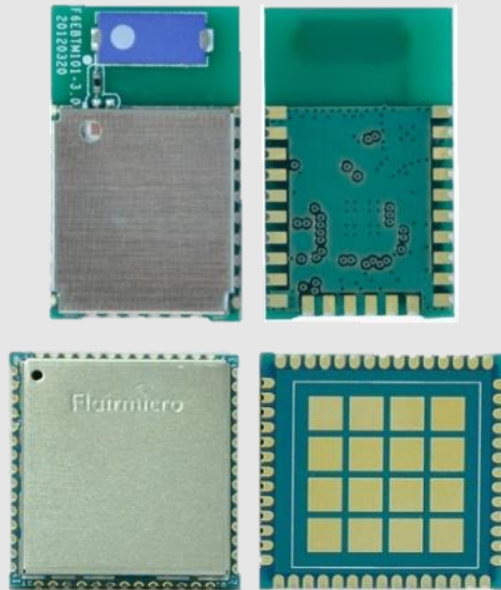
- Dual-mode BT4.2 +BR/EDR+BLE
- A2DP 1.2 , HFP 1.5 , AVRCP1.5
- Support MP3 , SBC , WMA ,ACC decoder
- Built-in 104MHz RISC MCU and 104MHz VoC DSP
- 16bit Stereo DAC
- 16bit Mono ADC

- Size: 25.6mmx28.3mmx2.45mm
- Chipset: RDA5856
- Bluetooth Class 2 (10 meters)
- Temperature: -20°C to +65°C
- UART interface to 3Mbits/s
- Stereo output
- Mono MIC input
- Interface : UART , Analog ,

# BT FULL Module

BT 4.0 BLE only

BTM101



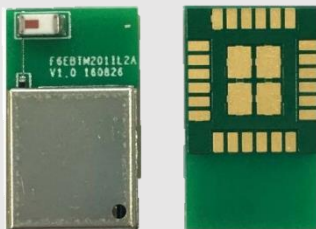
- BT4.0 BLE only
- Profile : ATT , GATT , SMP , L2CAP ,GAP
- Built-in 64KBRAM,64KBROM and 64KB EEPROM
- Built-in WDT ,10bit ADC and clock

- Size: 22mmx13.4mmx2.3mm
- Chipset: CSR1000 series
- Temperature: -30°C to +85°C
- Interface : UART , ADC , PWM , IIC , SPI , IO
- BQB/FCC/CE

# BT FULL Module

BT 4.2 BLE only

BTM201



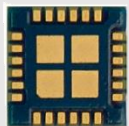
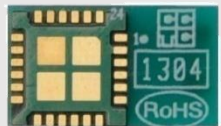
- BT4.2BLE only
- Profile : ATT , GATT , SMP , L2CAP ,GAP
- Built-in 80KBRAM,256KB
- Built-in WDT ,10bit ADC and clock
- G.722 Codec
- 4x Quadrature decoders
- Keyboard Scanner
- IR encoder
- IIC master controller

- Size: 18mmx10.6mmx2.7mm
- Chipset: CSR1024 series
- Temperature: -30°C to +85°C
- Digital MIC input
- PWM Output
- Interface : UART , ADC , PWM , IIS , IIC , SPI

# BT HCI Module

BT 4.0 Module

BTM804/805



CSR 8811/8510



- Fully qualified BT 3.0 –HS system
- Support BT 4.0 (low energy)
- Compliant to BT 2.1 + EDR
- High-sensitivity BT receiver
- Fully-speed BT operation with full piconet and scatternet support
- High-speed UART port (up to 4Mbps)
- PCM/I2S digital audio interface

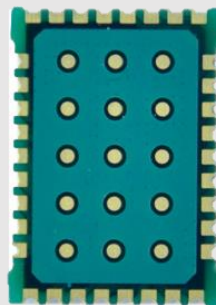
*Very small Dual mode HCI module with and without antenna*

- Size: 7mmx7mmx1.5mm without Antenna
- Size: 7mmx12mmx1.5mm with Antenna
- Chipset: CSR8811
- Host Interface: UART
- 5Mb ROM
- Wakeup Interrupt
- Debug SPI
- Bluetooth Class 1.5 (6dBm TX)
- BT Profiles: Up to HCI
- 5 GPIOs

# BT HCI Module

## BT 4.0 Module – Automotive

**BTM808**



**BTM081A/B**

- Size: 23.24mmx12mmx2.0mm
- Chipset: CSR8311-Automotive
- Automotive Grade
- Temperature: -40°C to +85°C
- BT2.1+EDR, BT3.0 – HS, BT4.0
- Class 1.5 (7.5dBm RF power)
- Two PCM/I2S digital audio interface
- HCI BT module
- UART and USB host interfaces

- Size: 23.24mmx12mmx2.0mm
- Chipset: BCM89071/CYM20713
- Automotive Grade
- Temperature: -40°C to +85°C
- BT2.1+EDR, BT3.0 – HS, BT4.2
- Class 1.5 (7.5dBm RF power)
- Two PCM/I2S digital audio interface
- HCI BT module
- UART host interfaces

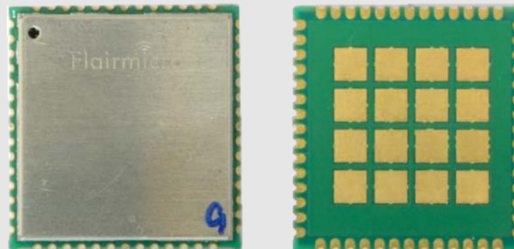
***FCC, CE, QDID Listed JAMA Passed***



# BT HCI Module

## BT 4.0 Module - Automotive

- Dual-mode BT 4.1
- 80MHz RISC MCU and 80MIPS Kalimba DSP
- Stereo/Dual-mono codec with 2 mic inputs and stereo audio output
- 2 mic CVC
- NBS &WBS
- SBC and aptX codec
- PCM&IIS digital audio interface
- UART,USB,IIC
- Automotive grade



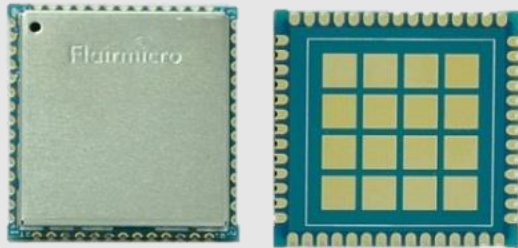
- Size: 21x20x2.8mm without Antenna
- Chipset: CSR8350
- Host Interface: UART/USB
- Wakeup Interrupt
- Debug SPI
- Bluetooth Class 1.5 (6dBm TX)
- BT Profiles: Up to HCI

# COMBO Module

802.11n+BT4.0+GNSS

Multi-Function Modules

CBM28X/38X Series



- With a unique 20mm x 21mm x 2.5mm packaging design, 12 multi-function combo modules offered by FLC-CBM28x/38x series are all pin-to-pin compatible. This design allows the user to add/remove features easily.

Single module integrates all functionalities including WiFi, BT, BLE, GPS and Glonass

- Support full BT standards: BT2.1+EDR, BT3.0-HS and BT4.0-BLE

- With measurement and compensation, the RF performance are guaranteed for all modules within -40°C~85°C temperature range

- Automotive Grade modules with AEC-Q100 chipset built-in

- Support GPS, GLONASS (Russian positioning system), QZSS (Quasi-Zenith Satellite System) and SBAS all at the same time

- Support up to 36 satellites

- 16 high-accuracy tracking channels (GPS, SBAS and QZSS)

- 9 high-accuracy tracking channels (GLONASS)

- Mechanism to coexist with and other wireless technologies

- Bluetooth Smart Ready (Full BT4.0 supported)
- BT, BLE Voice and WiFi can function at the same time, as well as can be prioritized by the coexistence mechanism
- Support SBC and WBS Voice Coding
- Support all BLE Profiles
- Up to 10 BLE devices can be connected

- 2.4G and 5G Dual Band WiFi
- Support 802.11a/b/g/n
- 20MHz Bandwidth (SISO and MIMO) (up to 144Mbps)
- 40MHz Bandwidth (SISO) (Up to 150Mbps)
- Support 802.11n MIMO (2.4GHz Band / 20MHz bandwidth)
- Encryption: WEP64/128, WPA, WPA2, KIP, CCMP(AES), WAPI
- Support 802.11d,e,h,i,k,r
- WiFi and BT/BLE Coexistence (Single 2.4GHz Antenna )
- High speed SDIO supported

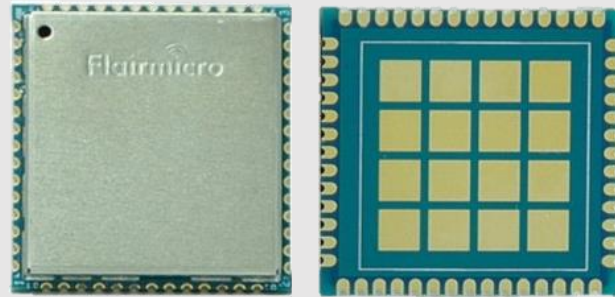
Product Name		Features				
Automotive	Industrial	WLAN			BT/BLE	GNSS
		2.4GHz	5GHz	MIMO		
CBM383A	CBM383I	√	√	√	√	√
CBM283A	CBM283I	√	√	√	√	
CBM386A	CBM386I	√	√		√	√
CBM286A	CBM286I	√	√		√	
CBM387A	CBM387I	√			√	√
CBM287A	CBM287I	√			√	

## COMBO Module

802.11ac+BT4.1

Multi-Function Modules

CBM251



- 20mm x 21mm x 2.5mm
- Single module integrates all functionalities including WiFi, BT and BLE
- BT 4.1, WIFI 2.4G and WIFI 5G use the same antenna interface
- 4-wire high speed UART and includes PCM for audio
- With measurement and compensation, the RF performance are guaranteed for all modules within -40°C~85°C temperature range
- Automotive Grade modules with AEC-Q100 chipset built-in

- Bluetooth Smart Ready (Full BT4.1 supported)
- BT, BLE Voice and WiFi can function at the same time, as well as can be prioritized by the coexistence mechanism
- Support SBC and WBS Voice Coding
- Support all BLE Profiles

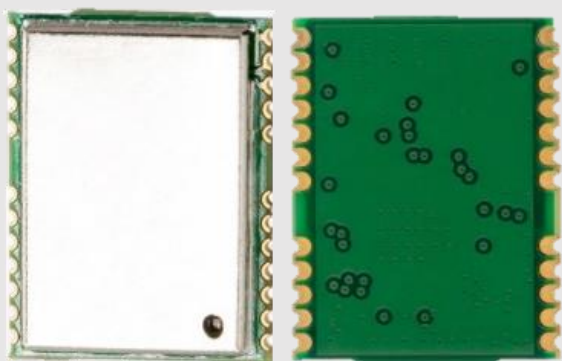
- 2.4G and 5G Dual Band WiFi
- Support 802.11a/b/g/n/ac
- Support 20,40 and 80MHz channels
- 40MHz Bandwidth (SISO) (Up to 433.3Mbps)
- Encryption: WPA, WPA2,
- WiFi and BT/BLE Coexistence (Single 2.4GHz Antenna )
- High speed SDIO supported ( SDIO V3.0 )

# GNSS Module

Beidou + GPS

Dual-Mode Positioning Modules

SLM310



- 16mm x 12.2mm x2.4mm
- Chip:HD8020
- Support GPS L1 & BD2 B1
- Positioning precision:2.5m CEP,SBAS 2.0m CEP
- Equipped with backup power input interface , enabling warm start
- Enable antenna status detection and short-circuit protection
- Interfaces : UART , IIC

Standards	Bands
GPS	L1(1575.42.MHz)
Beidou	B1(1561.098MHz)

**03**

# Manufacturing

## Production base : Fuzhou Institute of Technology

Lianjiang plant was established in June 2015, and completely in accordance with the production requirements of microelectronic products, including SMT, Test, Assemble workshop... all of the production and testing equipments are top-ranking. And it's TS16949, ISO9001, ISO14001 certified.



*THANK YOU*

